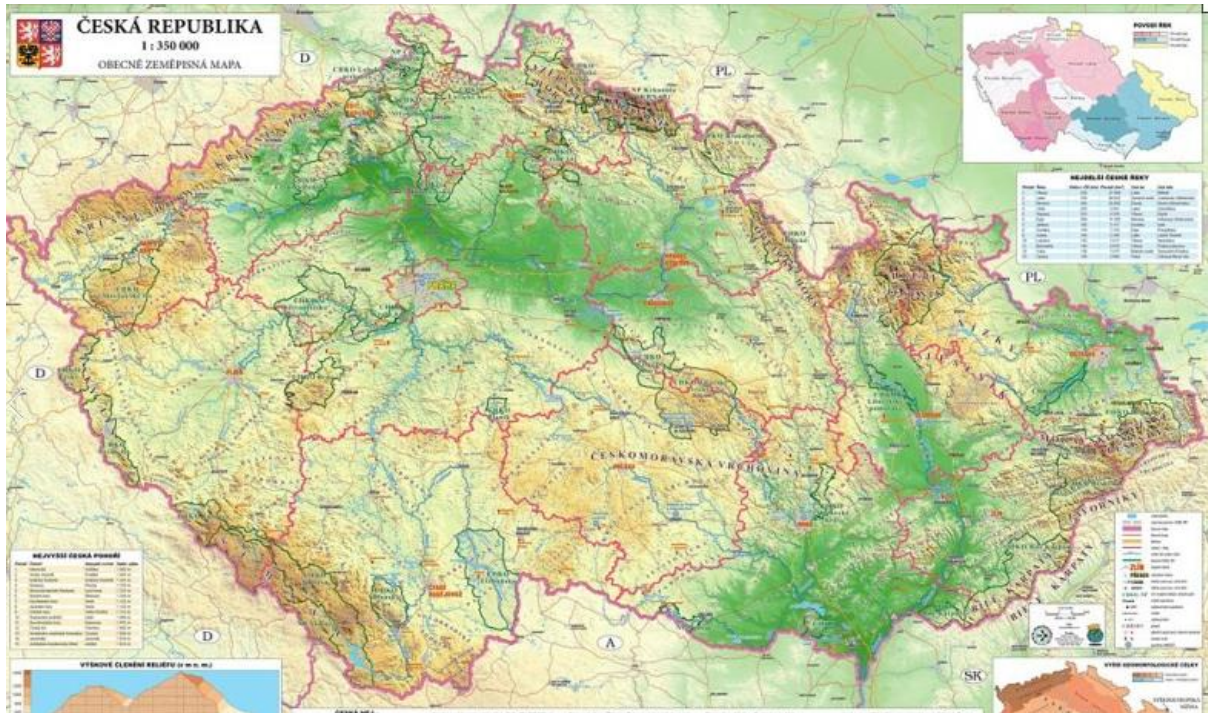


Geografy of the Czech Republic



The Czech Republic lies in the central Europe.

Bohemia, the western part consists of a basin drained by the Elbe and Vltava rivers, surrounded by mountains, such as the Krkonoše, Krušné hory or Šumava. The highest peak of the country is Sněžka (1,603 m) is in Krkonoše Mountains. Moravia, the eastern part of the country, is also hilly (Jeseníky Mountains or Beskydy). It is drained mainly by the Morava River, but it also contains the source of the Oder River. Water from the Czech Republic flows to three different seas: the North Sea, Baltic Sea, and Black Sea.



The Czech Republic has a temperate climate, situated in the transition zone between the oceanic and continental climate types, with warm summers and cold, cloudy and snowy winters. The temperature difference between summer and winter is due to the landlocked geographical position. At the highest peak of Sněžka, the average temperature is -0.4°C , whereas in the lowlands of the South Moravian Region, the average temperature is as high as 10°C . The country's capital, Prague, has a similar average temperature, although this is influenced by urban factors. The coldest month is usually January, followed by February and December. During these months, there is snow in the mountains and sometimes in the cities and lowlands. During March, April, and May, the temperature usually increases, especially during April, when the temperature and weather tends to vary during the day. Spring is also characterized by higher water levels in the rivers, due to melting snow with occasional flooding. The warmest month of the year is July, followed by August and June. On average, summer temperatures are about $20\text{--}30^{\circ}\text{C}$ higher than during winter. Summer is also characterized by rain and storms.

There are mainly deciduous and mixed coniferous forests. Characteristic tree is beech, oak, maple, larch, fir and pine. There are four national parks in the Czech Republic. The oldest is Krkonoše National Park, and the others are Šumava National Park, Podyjí National Park and Bohemian Switzerland and many protected areas.

1) Answer the questions, use the text above:

1. Write four main rivers in the Czech Republic:

2. Which month is the coldest and which one is the hottest?

the coldest month: _____, the hottest month: _____

3. Write at least two czech national parks: _____

4. Write the name of the highest peak of the Czech

Republic: _____

Write the name of the mountain range, where the highest mountain is: _____



5. Do you think you can ski in the Czech Republic? _____

2) Match the map and the names of mountains (use internet to find these mountains):

Krkonoše Krušné hory Šumava Hrubý Jeseník

